



THE MILWAUKEE RAILROAD - SOUTHERN DIVISION

NEWSLETTER - MARCH AND APRIL 1983

SPECIAL ISSUE

ATTENTION!

ATTENTION!

ATTENTION!

There will be a series of OPEN HOUSE MEETINGS held throughout the System - starting on April 5 and going thru May 3, 1983.

APRIL

- 5 Kansas City, Missouri
- 6 Ottumwa, Iowa
- 7 Davenport, Iowa
- 8 Savanna, Illinois

- 12 Portage, Wisconsin
- 13 Wausau, Wisconsin
- 14 Green Bay, Wisconsin

- 18 Bensenville, Illinois
- 19 Milwaukee, Wisconsin
- 21 Terre Haute, Indiana

- 26 Tomah/LaCrosse, Wisconsin
- 27 Twin Cities
- 28 Montevideo

MAY

- 2 Dubuque, Iowa
- 3 Mason City, Iowa

For the exact locations of the Open House Meetings to be held on the Southern Division please refer to page 17 of this issue of the Newsletter and also the Notice which will be posted on all Bulletin Boards on the Southern Division as well as to the different Departments such as Maintenance of Way, Car and Locomotive Departments and Police Department.

CHICAGO TERMINAL AND SURROUNDING AREA NEWS

Mr. ROY R. CHENEY, Retired Assistant Supervisor of Bridge Mtce (system) passed away on January 1, 1983, in Maquoketa, Iowa and was laid to rest at Bellevue, Iowa.

ROY was 85 years old and had worked in the Bridge and Building Dept on the Milwaukee-well over forty years. He was Chief Carpenter on the Iowa Division prior to being promoted to Asst. Supv. of Bridge Mtce.

OUR SYMPATHY is expressed to the families of:

DENNIS and SUZANNE MOGAN on the loss of SUZANNE's father on February 8, 1983.

GEORGE STRAUBINGER, retired Wire Chief who passed away on January 20th in Cedar Rapids, Iowa.

RICHARD I. MISKIMINS (Jiggs) on the death of his wife VERNA MISKIMINS who passed away on February 6, 1983 in Pueblo Colorado. JIGGS formerly was Director-Stations and Transportation Systems, Milwaukee Road, and is currently in charge of the A.A.R. Test Center in Pueblo, Colorado.

DICK SUPERSON, Director Contract Development on the loss of his mother MARY SUPERSON in February of 1983.

V. A. CRISCI-Director Freight Claims Prevention, on the loss of his father JOHN A. CRISCI who passed away on February 2, 1983.

MASON BULL, 79, veteran Morrison attorney and former president of the Illinois Bar Association who recently passed away. Mr. Bull was employed in the Milwaukee Road's legal department before establishing a law practice of his own in Morrison.

*

*

*

BENSENVILLE CAR DEPT:

Congratulations to H. SHELLY for completing flight school and receiving his pilots license.

CONGRATULATIONS to the Safety Seekers of Bensenville for going through the whole year without an injury. GOOD JOB.

CONGRATULATIONS to TOM HANLEY and his lovely ~~bride~~ on their recent marriage. BEST WISHES

CONGRATULATIONS to D. D. Fisher on the way he deals with Safety. He really takes an interest in whats going on as well as adding a personal touch when it comes to safety.

W. Crawford
Asst. Mech. Foreman

*

*

*

CONGRATULATIONS and the Best of Everything to JUDY and RAY BARRETO on the arrival of a bouncing baby boy - Phillip Jonathan weighing in at 7 lbs. 8 oz. on February 6, 1983.

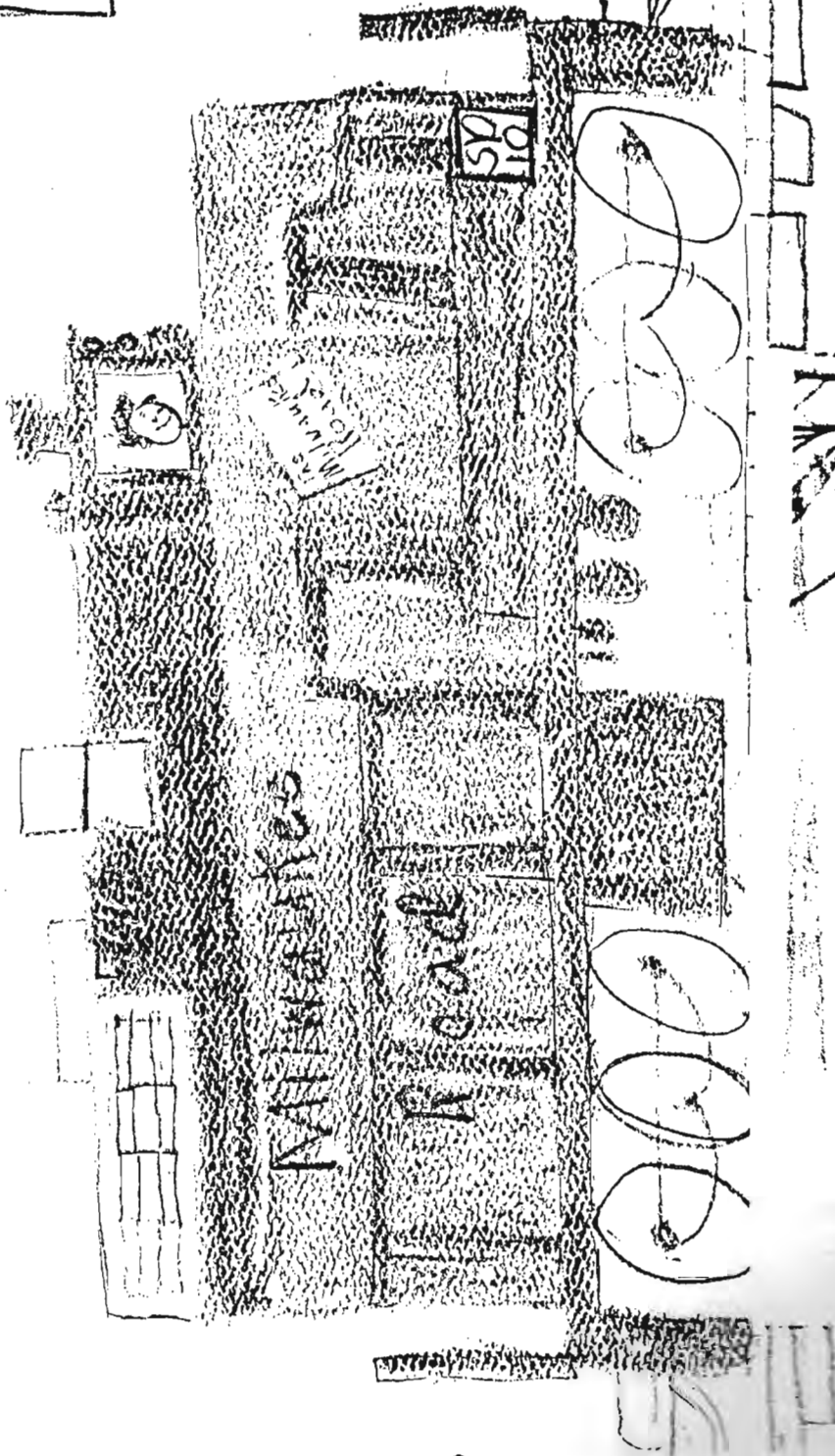
To the crew of Milwaukee Road

Form

Richard
Zamato

I Like
the

Milwaukee
Road



MEDICAL SERVICES HEALTH TIP
BY
FRED RODRIGUEZ, R.N., M.S.N.

SELECTING A PHYSICIAN

If you needed to find a doctor out of necessity, or approached by someone to recommend a doctor, how would you choose that physician?

In this day and age when everything, including medical and health care, is prohibitively expensive, in reality, maintaining good health becomes an investment because we all need to be in good health and in order to obtain and maintain it, we need money.

There are mounting questions over how much longer Americans can afford to pay for the rapidly rising costs of health care. Now, more than ever, people are concerned with choices -- some more costly than others. And cheaper does not always mean less safe or effective. Increasingly, health care consumers, you and I, recognize that by "shopping" sensibly, we can get the best value, that is, more and better services for our health care dollars.

Money magazine, a magazine that advises how to save and invest your money wisely, in a recent publication, offers guidelines in picking a doctor; Dr. James Sammons, Executive Vice President of the American Medical Association as the adviser, proposes the following:

- 1) Start looking and asking questions when you're healthy.
- 2) Find a primary care physician -- a doctor trained to serve as your first line of medical defense. They, in turn, refer you to the proper specialist, if one is needed.
- 3) Call your local medical society, obtain at least two or three names of member physicians.
- 4) Call the internal medicine or family practice department of the nearest university -- owned or affiliated teaching hospital for their recommendation.
- 5) Call each doctor at his office and inquire as to charges -- such as a basic physical examination, electrocardiogram, or a blood count.

- 6) Find out whether the doctor practices alone, as a part of a group, or in a health maintenance organization. Some individuals feel more comfortable with one over the others.
- 7) Check the doctor's credentials. Ask him personally, or look up in the national directory of medical specialists (can be found in public, hospital and medical school libraries). You will find out what training he's had, professorships he holds, and if he is a member of a medical society.
- 8) Find out where the doctor completed his/her residency. The best programs generally are found at university-owned hospitals.
- 9) Inquire if the doctor has passed a certification examination in his specialty. (It's the best yardstick one has.)
- 10) Learn whether the two of you are compatible. People who get along with their doctors tend to get the most for their medical dollar; they follow their doctor's instructions more closely.
- 11) Question what hospital the doctor uses. Good doctors use good hospitals.

Following the choice of a family physician, the patient should begin placing trust and confidence in the practitioner. The development of this trust could begin by feeling free to ask the doctor any questions that are felt to be important relevant to health or well-being; no matter how "silly" they might seem, they should be asked.

Questions that should be asked include complete current information concerning diagnosis, treatment, and prognosis in terms that can reasonably be understood. When not medically advisable to give such information to the patient, the information should be made available to an appropriate person in his behalf.

This small "tip" in doctor-patient communication calls to mind that health care is a service the patient desires and requests, and should not be something inflicted on him.

Milwaukee

Motor

Transportation

Company



The MMTC Driver's extend their thanks to Union Steward RALPH MANCINI for a job well done on resolving a recent labor issue with the Company.

GOOD LUCK to Driver STAN FREEMAN and wife FLO who is retiring in March after many years with the Company.

HAPPY FISHING !!!!!!!!!

SAVANNA NEWS:

CONGRATULATIONS to DAVID SHRAKE, Savanna High School Senior who played in the All-State Music Festival in Springfield, February 3 -5 and performed the fifth trombone Part. This makes DAVID the fifth best Jazz trombone player in the state. DAVID is the son of Field Supervisor Irv Shrake and wife Betty.

CONGRATULATIONS to Savanna Roadmaster's Clerk ED FISCHER and FLORENCE who celebrated their 40th Wedding Anniversary February 14, 1983 - VALENTINES DAY.

Our SYMPATHY AND CONDOLENCES are expressed to the families of:

Clinton Yard Foreman WAYNE MANGLER and family whose little granddaughter Tara Ann was stillborn on January 25, 1983.

MRS. FRANK (LOLA) FISHER, 82, former Superintendent Office Steno and sister of retired D&I Conductor M. K. LYNN, who passed away in Sterling Illinois on February 7th.

Retired D & I Engineer CHARLES G. "CHOO-CHOO" MYERS of Mt. Carroll who passed away February 10 at age 76.

NANCY FRANZEN, 32, wife of Clinton Section Laborer GAYLEN "JIGGS" FRANZEN who passed away on February 11th.

Retired Chief Clerk RAYMOND E. "BUD" DUHIGG, 81 who died on February 11th, BUD was Chief Clerk to the Superintendent, Savanna, Illinois form many years.

Retired Pipefitter WM. ANDERSON of Savanna who passed away on Feb. 15, 1983 Mr. Anderson was the father of TABERTUS and SAMMY, Laborers at the Savanna Roundhouse.

MRS. DORA GRUNDALL, wife of Retired Savanna Yard Switchman, RALPH who died on February 16, 1983 at Clinton, Iowa.

C. E. Ross - Savanna

E. M. Nast - Savanna

*

*

*

CHILLICOTHE NEWS

CONGRATULATIONS to KENNY BREES, Agent at Seymour, Iowa on celebrating his 59th Birthday on February 3, 1983.

It is my understanding that, Clarence Collins, Jr. Operator at the Missouri River Drawbridge, will retire on February 28, 1983, after 37 years on the Milwaukee. All of us would like to say to have a safe, happy and healthy retirement.

I will be taking up a collection for a gift for Clarence, those who wish to give can mail their donation to me, at 2nd Jackson Street, Chillicothe, MO 64601.

Ron Atwell
Operator Chillicothe

FUEL CONSERVATION - ENERGY CONSERVATION ON THE MILWAUKEE

It's been a pretty good year in the area of locomotive fuel conservation. Figures published in FM/TM indicate that approximately \$4.6 million were saved during the first 11 months of 1982. For the entire year, the tally exceeds \$5 million.

As many programs did not take effect until mid-year, we are confident that a great potential exists for even larger savings in 1983.

These savings reflect a smaller amount of fuel purchased to handle a given amount of business through an improvement in our ratio of gallons per thousand gross ton miles. This ratio can be reversed and explained in terms of ton miles per gallon - something more akin to the miles per gallon we consider in the operation of our personal automobiles.

In 1981 our gallons per thousand gross ton miles were 2.12; for 1982, the ratio was 1.88. Taken another way, in 1981 we moved a ton of freight 471 miles for every gallon of fuel we bought. In 1982 we moved that same ton 531 miles per gallon.

How were these improvements achieved? No single program or policy was responsible and the full effect of all measures have not yet been seen. The major contributors were as follows:

1. Lowering train speeds from a maximum of 50 to 40 miles per hour on all intermodal trains.
2. Introduction of fuel conservation practices to our engineers via classroom training and the locomotive simulator. Estimates within the industry place the individual engineers impact on fuel consumed over a total trip between 10 and 40 percent - a huge amount of fuel in either case.
3. Change in locomotive deadheading policy to shut engines down rather than working unnecessary units on line. A good rule of thumb might be no more than two horsepower in the locomotive consist for each trailing ton.
4. Shutting down units at dieselhouses and terminals, weather permitting, between shifts and on layovers.
5. Vigorous spill abatement programs, with hands-on training for dieselhouse personnel to eliminate waste on engines are fueled.
6. Improved security at fueling points, including the installation of sophisticated meters and sensing devices to make sure we get the fuel we pay for.
7. The elimination of unneeded units on freight trains.

These programs will all continue in 1983.

In addition, several other measures are either coming on line or are under active consideration.

The American Coleman Power Sentry dispatch has proven quite successful in controlled testing between Milwaukee and St. Paul. This system,

which consists of a small computer located on each locomotive, continually and automatically adds or reduces power from trailing units and causes the lead or leading units to work in the higher throttle settings - the most fuel-efficient area for turbo charged locomotives.

Four GP-40's have been equipped with this device.

A similar effort is planned using four other GP-40's equipped with manual Harmon fuel saver switches. This system achieves the same goals as the American Coleman System, but relies on the engineer to make frequent settings and adjustments through the use of a control console located on the control stand of the lead unit.

Additional security devices will be installed at the smaller or Class "B" locations. Our objective is to make it nearly impossible for dishonest vendors or drivers to defraud the railroad through short loads or contaminated fuel.

Work continues in the study of track-train dynamics. This is a rather general phrase that covers many of the design characteristics inherent to today's railroading that affect train operation and fuel consumption patterns. Among these are slack action resulting from the relative positioning of loads and empties in trains, aerodynamic properties of cars and locomotives, block signal placement and requirements, and several fuel additives and miscellaneous devices presented by eager vendors.

We will continue to examine our policies and test new products as they become available. Not all fuel saving devices live up to the claims made by their producers. However, the amount of fuel we use annually is so great that even a 2 or 3 percent savings returns more than enough to pay for the device, usually in less than a year's time.

If our goals are to be met, the continued cooperation of all employees is of paramount importance. Savings that result from energy conservation are substantial and can usually be effected with a minimal amount of disruption to those involved.

Energy conservation is certainly a concern of top management and should be high on our list of priorities as well.

M. H. Westerfield
Director - Energy Conservation

*

*

*

BUSINESS IS LIKE RIDING A BICYCLE. EITHER
YOU KEEP MOVING OR YOU FALL DOWN.

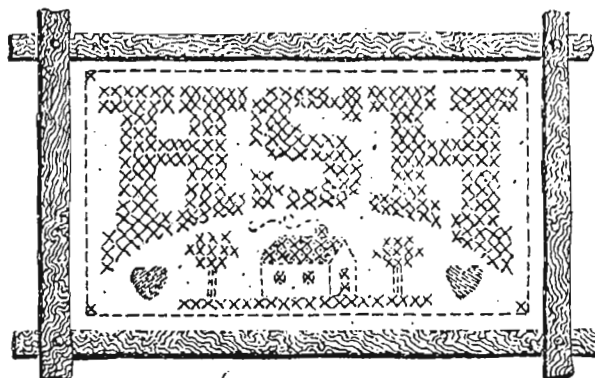
John David Wright.

Proverb Analysis Test ☆☆

by Phil Waters

Last November we promised that the popular "Equation Analysis Test" would soon be back in a new format and with a new twist. And here it is. This time there are no numbers; instead, each line of letters represents a familiar proverb or saying in which the key words have been replaced by their initial letters. For example, H. W. H. is L. stands for "He who hesitates is lost." Mental flexibility and an ear for the cliché are the keys to solving. If you don't discover all the proverbs on the first try—and you probably won't—put them aside for a couple of days and then try again. You might as well take your time, because you have a whole month to get a perfect score. That's right—the answers won't appear until the April issue. Happy solving.

Answers next issue



- | | |
|----------------------------------|--|
| 1. T. H. are B. than O. | 13. N. is the M. of I. |
| 2. W. in R. D. as the R. D. | 14. D. L. a G. H. in the M. |
| 3. A. W. and N. P. M. J. a D. B. | 15. The G. is A. G. on the O. S. of the F. |
| 4. An O. of P. is W. a P. of C. | 16. S. and S. W. the R. |
| 5. H. W. L. L. L. B. | 17. D. P. A. Y. E. in O. B. |
| 6. The E. B. C. the W. | 18. T. M. C. S. the B. |
| 7. I. at F. Y. D. S. T. T. A. | 19. O. G. T. D. A. |
| 8. The R. to H. is P. with G. I. | 20. S. the R. and S. the C. |
| 9. A. that G. is N. G. | 21. F. R. in W. A. F. to T. |
| 10. The P. is M. than the S. | 22. B. of a F. F. T. |
| 11. An A. a D. K. the D. A. | 23. Y. C. T. an O. D. N. T. |
| 12. P. W. L. in G. H. S. T. S. | 24. S. and Y. S. F. |



OFFICE OF SOCIAL COUNSELING

R. C. Hickle - Director

The other day while I was talking to one of our employees, the discussion got around to brain damage related to the use of alcohol, and he suggested that I write a letter for the newsletter on the subject. I shall do so, but please remember that I am not a neurologist nor even a doctor. My information is based on a long association with people who drink and my observations of them.

We are told that we have all the brain cells we are going to have when we are born, and it isn't too long before we start losing them. Fortunately, we seem to have a lot of extra cells, and even as we lose them naturally through the process of aging, other cells take over and we are able to function. Many things, such as strokes, cause sudden and dramatic loss of brain function, but there are other losses which are equally severe, but much more gradual.

There is a good evidence that each drink of alcohol in any form extracts its cost in brain cells, and the brain damage that we see in late stage alcoholics is the cumulative effect of this loss. I am impressed by the resemblance between a long-term drinker and a brain - damaged boxer. Both have slurred speech, the jerky walk, the loss of memory. The boxer who continues to fight and the booze fighter who continues to drink suffer from final ability to function, and the result is either death or complete disability.

We see this damage in young people everyday, but fortunately at least part of the damage seems to be reversable if one quits drinking. The destroyed cells are not replaced, of course, but other areas of the brain seem to take over.

I have learned about this brain damage in hospitals, jails, care centers, and cemeteries. The people who are there have usually learned too late.

The next article is the last of our series on the Social Counseling Office on the Milwaukee Road.



OFFICE OF SOCIAL COUNSELING

R. C. Hickle - Director

One of our fellow employees sent me the following sentiments, which have been printed in Ann Lander's column and in many publications which are read by alcoholics. I think it expresses perfectly the pain and frustration of alcoholics and their families. I offer it without any further comments.

POSITIVELY NEGATIVE

We drank for joy and becam miserable.

We drank for sociability and became argumentative.

We drank for sophistication and becam obnoxious.

We drank for Friendship and made enemies.

We drank for sleep and awakened exhausted.

We drank for strength and felt weak.

We drank for medicinal reasons and acquired health problems.

We drank to get calmed down and ended up with the shakes.

We drank for confidence and became afraid.

We drank to make conversation flow more easily and the words came out slurred and incoherent.

We drank to diminish our problems and saw them multiply.

We drank to feel heavenly and ended up feeling like hell.

We drank to cope with life and invited death.

At this time I would like to thank Mr. R. C. Hickle for the articles he has furnished to us for our newsletters. I hope they have been of help and of some information to all our employees.

Mr. HICKLE-Thank you for the articles that you have written for our Newsletters and the time you spend helping fellow employees.

THANK YOU!!

Editor



On January 14, 1983 Conductor E. DAVID SHAFER was honored at a Surprise Retirement party and dancing to the "Roundhouse Bank" at the Knights of Columbus in Davenport, Iowa completing 35½ years of Railroading.

The Party was hosted by his wife and family and he was surprised!! His wife, Phyl said that was the first time in their 35 years of marriage that she has seen him speechless. Approximately 200 friends and co-workers were present including Trainmaster J. D. Kramer-Muscatine and P. J. Rooney, Trainmaster - Davenport.

Mr. Shafer was presented the lovely counted cross-stitch made and written by his lovely wife. It "tells it all" from the beginning to the end of his Railroad Career.

Dave Shafer was on the Iowa City Local 372/373 - last day worked was January 7th.

CONGRATULATIONS ON A SAFE, HEALTHY, AND HAPPY RETIREMENT!!!!!!
POEM ON THE ABOVE PICTURE READS AS FOLLOWS:

Before he was born and for quite a long time
The Rock Island Road was a mighty fine line
Her Roadbed was smoothe and her trains were fast
But that's now gone and part of the past.

MUSCATINE/DAVENPORT AREA NEWS CONTINUED

John Farrington built her into one of the best
The Golden State Limited was the pride of the West
Then came the decline, they decided to sell
Which turned out to be the Rock's road to hell.

The U.P. was willing and said let's combine
The I.C.C. said "whoa, we'll study this for a time"
And study they did, for 12 years or so
When finally they said "Yes"-- the U.P. said "no".

Then came the vultures to pick her apart
Leaving just a dead shell -- no soul -- no heart
The K.C.T. and C.N.W. were next in line
To afford him a job to finish his time.

So off to Des Moines for a couple of years
He had a job so that was the least of our fears
Then up popped an Angel -- The Milwaukee Road
One last final move and closer to our abode.

The travelin' to Iowa City and back each day became a grind
But we know in our hearts it would soon be all behind
So after 35 yrs. of huffin' -- puffin'-- and flaggin'
It's the end of the line and his caboose is draggin'.

All of us at Muscatine wish Switchman MILES WALLINGFORD and his wife ELEANOR - much happiness and get well wished to MILES for a speedy recovery. MILES just received his disability-retirement effective December of 1982. He first started working as a switchman for the CRI&P Railroad at Silvis, Illinois on December 18th, 1955 - working there until March 31, 1980. He then came to the Muscatine, Iowa area to work for the Milwaukee Road on April 14, 1980, until receiving his disability on January 4, 1982.

Good to have back to work after emergency hospitalization SECTION FOREMAN D. E. McCALLISTER ("MAC" to his many friends). MAC was suddenly hospitalized for a short period of time and THANKS to his many friends for remembering him with cards, etc.,
WELCOME BACK

GET WELL WISHES for a speed recovery are expressed to JEAN LOGEL, wife of Car Distributor "ABBIE" Logel at Muscatine, Iowa. Jean fell down some steps in December and was rushed to Mercy Hospital in Iowa City where she was released in January. HOPE YOUR FEELING BETTER!!!!

In January a Safety Dinner was held by Mr. Joe Kramer of the Milwaukee in honor of the employees in Muscatine not having any injuries in 1982. The dinner was a great success and in attendance were Mr. W. F. Plattenberger, Mr. J. W. Stuckey and his wife, Mr. R. L. Tewell and his wife, Chief Dispatcher R. D. Awe and wife, Mr. W. E. Dunn and his wife and also Craig Willett and myself. It was nice to see people from the Milwaukee as well as former Rock Island people working together for one common goal SAFETY!!!!!!

PUZZLE #2
 Contributed By:
 Carl Baumkirchner
 Customer Serv. Dept.
 Supt. Office

SCIENCE & MECHANICS WORDFINDER PUZZLE

ENERGY TERMS

BY ROBERT FUNDERBURG

Each of the 55 words in the list below, related in some way to energy, can be found in the letter grid by looking up, down, backward or diagonally. Circle each word as you find it. Should your puzzle-solving batteries drain, the solution appears on page 109. Charge!

AMPS	ELECTRICITY	ION	PROTON
ATOM	ELECTRON	JOULE	PUMP (HEAT)
ATOMIC	ERG	KILOWATT	QUANTUM
BATTERY	FIELD	KINETIC	REACTOR
BREEDER	FISSION	LIGHT	SHALE
CAPACITOR	FLOW	MEGAWATT	SOLAR
CHARGE	FLYWHEEL	METER	STEAM
CIRCUIT	FOOT-POUND	MOMENTUM	STORAGE
COAL	FOSSIL	NEGATIVE	SUN
CONDUCTOR	FUEL CELL	NEUTRON	TURBINE
CONVERSION	FUSION	NUCLEAR	URANIUM
COOLING	HEAT	OIL	VOLT
CORE	HORSEPOWER	PHOTON	WIND
EINSTEIN	INDUCTION	POSITIVE	

```

N R O T C U D N O C H C I E T F L R
I O C O N V E R S I O N R M I W E E
E G R A H C A S T O R A G E U A L W
T E O T K V A R L T L E L R C N E O
S D O O C I A I E O A D R T R L C P
N M N M S E N N S I C W O U I Y T E
I O R I L G L E O D T R O G C U R S
E M P C W Y R E T T A B H L R E I R
I E U R A N I U M I O T L B I O C O
D N U O P T O O F E C H I R N K I H
O T D P S K I L M L I N P E M O T A
L U U U W S O A F U E L C E L L Y Q
C M O P C W E L M O H Q T D V I N U
P N E G A T I V E J N E L E H S O A
H N O I S S I F T U R P O R N H I N
U E G T S A P O S I T I V E T A S T
T R A O O Y U P N O R T U E N L U U
E T F T A R M E G A W A T T U E F M
R O T I C A P A C L E E H W Y L F C
  
```

Answers for both
 puzzles will appear
 in May's issue.

MEDICAL SERVICES HEALTH TIP
BY
FRED RODRIGUEZ, R.N., M.S.N.

CHECKING YOUR "I.Q." ON TAKING MEDICATION

Do you know the basic safety principles in taking medication? Yes? No? Let's check ourselves as we consider some of the most common situations that could arise while taking medication.

This is not a pass fail quiz. Its purpose is to help you become safety conscious in taking medicine and perhaps preventing a home emergency.

Check "T" for TRUE or "F" for FALSE.

No peeking at the answers until you have completed the entire quiz.

- | <u>T</u> | <u>F</u> | |
|-----------------------------|--------------------------|--|
| 1. <input type="checkbox"/> | <input type="checkbox"/> | You should stop taking your medicine if it doesn't seem to be making you feel better. |
| 2. <input type="checkbox"/> | <input type="checkbox"/> | It is alright to have your usual cocktail or two before lunch or dinner if you are taking prescribed medication. |
| 3. <input type="checkbox"/> | <input type="checkbox"/> | It is alright to accept your friend's offer to some "left-over" medication that worked well for her when she had what seems to be the same illness you have. |
| 4. <input type="checkbox"/> | <input type="checkbox"/> | Your doctor has prescribed your medicine to be taken three times a day but you aren't sure at what times it should be taken; your doctor or pharmacist should be contacted for an explanation. |
| 5. <input type="checkbox"/> | <input type="checkbox"/> | You are taking medication prescribed by your doctor and have decided to consult another doctor; he, too, has ordered medication for you. You should inform the second doctor of the medication you are presently taking. |

- | <u>T</u> | <u>F</u> | |
|-----------------------------|--------------------------|--|
| 6. <input type="checkbox"/> | <input type="checkbox"/> | Your doctor has ordered your medicine to be taken for two weeks; after taking medication for two days, you feel better. It's alright to stop taking the medication. |
| 7. <input type="checkbox"/> | <input type="checkbox"/> | You are a truck driver and your doctor has ordered medication that makes you very drowsy and seems to be getting more severe. Your doctor should be notified right away. |
| 8. <input type="checkbox"/> | <input type="checkbox"/> | You have noticed that sometimes you forget when you have taken your last dose of medication; don't worry, just double the next dose. |

Accident Prevention Programs Receive Golden Spike Award

Fifteen railroads were the recipients of the National Safety Council's annual Golden Spike awards for outstanding public accident prevention programs conducted during 1981.

The awards were announced at the June 15th meeting of the Association of American Railroads and the Council's Railroad Section at the Sheraton Station Square Hotel in Pittsburgh. Thomas Parry, executive manager for the Western Pennsylvania Safety Council, made the announcement.

Parry explained that the non-competitive public safety awards recognize the efforts of individual companies in the railroad industry to stimulate community and employee safety in the geographical areas they serve.

Award recipients for 1981 were:

Kansas City Southern Lines
Southern Pacific Railroad
Burlington Northern Railroad Co.
Union Pacific Railroad
Southern Railways
Norfolk and Western Railroad
Family Lines Rail System
Elgin, Joliet and Eastern Railway Co.
Canadian Pacific Railroad
Duluth, Missabe and Iron Range Railway
Butte, Anaconda and Pacific Railroad
The Chessie System
Illinois Central Gulf Railroad
The Milwaukee Road
The Terminal Railroad Association of St. Louis



Shown here are the Golden Spike award judges: J.M. McMillan and R.W. Jones, seated; and D.S. Dolinyak and D.O. Anderson, standing.

Judges for the Council's "Golden Spike" award were Donald Dolinyak, manager of safety for Illinois Central Gulf; Robert Jones, safety manager for the Chicago and Northwestern; Dale Anderson, manager of safety and rules for the Burlington Northern; and Joseph M. McMillan, assistant safety manager for Santa Fe Railway.

Judges took into consideration the number of people devoting full or part-time to the safety program, equipment and special facilities for the program,

safety materials used, special safety techniques, safety promotional materials developed, participation by road personnel in safety organizations and other activities, and use of radio or television time or newspaper advertising to promote safety.

Also considered were special promotions such as family night safety programs, school safety programs, and other safety activities such as trespassing programs for school children.

—H. R. Grigo

ATTENTION:

ATTENTION:

ATTENTION:

Anyone wishing to know more about the Retirement Party which is scheduled for Mr. W. E. Dunn on March 25, 1983 may contact Mr. Steve Paton on extension 3414 in Chicago Union Station.

OPEN HOUSE MEETINGS
SOUTHERN DIVISION

APRIL

- 5 Holiday Inn - 7333 N. Parvin Road - Kansas City, MO
6 Holiday Inn - Ottumwa, Iowa
7 Ramada Inn, Davenport, Iowa
8 Elliott Church Hall - Savanna, Illinois
- 18 Holiday Inn - 3801 Mannheim Road - Schiller Park, Illinois
21 Sheraton Inn - Terre Haute, Indiana

MAY

- 2 Holiday Inn - Dubuque, Iowa
3 Madonna Inn - Mason City, Iowa

All of the above meeting will be held at 7:00 p.m. with the exception of one, that is at Bensenville there will be two meetings one at 1:00 p.m. and one at 7:00 p.m.

All Employees and members of their families are welcome to attend Topics of discussion will be the Reorganization Plan and the 1983 Budget.

* * *

OTTUMWA NEWS:

Get Well wishes are expressed to P. A. Techel, Agent at Ottumwa Iowa who is home recuperating from a bypass operation. Our thoughts and Best Wishes for a speedy recovery are with you.

Our CONGRATULATIONS are expressed to R. D (Dick)Awe, Chief Dispatcher and wife Cheryl on the marriage of their son Dean to his new lovely bride Deb. Congratulations to the new Mr. and Mrs. Dean Awe.

* * *

The picture as illustrated of a Milwaukee Road Engine was found tacked up on the wall of the Beloit Depot.

Mr. Gene Hollister Engineer has advised that the picture was put there by one of our youngest admirers. He thinks Railroading is great.

* * *

CONGRATULATIONS and Best Wishes are expressed to Carl Baumkirchner-Manager of Customer Services in the Superintendent Office on the marriage of his son Patrick to Sharon. Congratulation to the happy couple.

HAZARDOUS MATERIALS

R. W. Riedl



Over the past few months, I am sure you have all noticed a great deal of activity in the procedures concerning our handling of materials.

Because of the importance in the safe handling of hazardous materials to this railroad and its employees, a Hazardous Material Committee was established to resolve the problems.

To date there has been three such Hazardous Material Committee meetings which have resulted in several procedural changes which you may have been involved in.

We will be shortly undertaking the placement of updated Bureau of Explosives Posters on all of our Agency Offices, Yard Offices, Dispatchers offices and in all road and yard cabooses.

POSTER NO. 1 - contains excerpts from the Department of Transportation Regulations for the transportation of hazardous materials by rail.

POSTER NO. 3 - contains information on the switching of placarded cars.

POSTER NO. 4 - contains advise as to the position in trains of placarded cars containing hazardous materials.

POSTER NO. 5 - is a guide for the preparation of waybills for the rail transportation of hazardous materials.

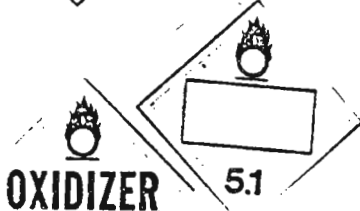
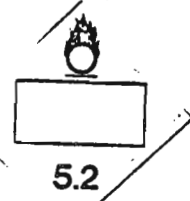
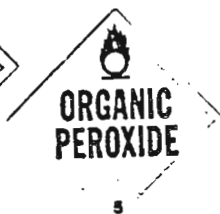
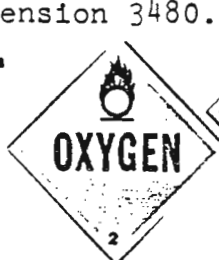
The cooperation of all employees towards the retention of these posters in the various offices and cabooses is solicitate.

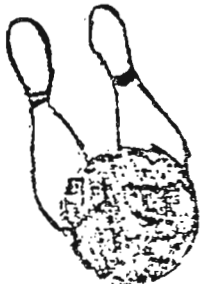
In order to help improve our overall performance your suggestions are welcomed. Suggestions should be addressed to Mr. R. W. Riedl, Director, Hazardous Materials - Control, 516 West Jackson Blvd., Chicago, Illinois 60606, Room 221, Extension 3480.

NOTE

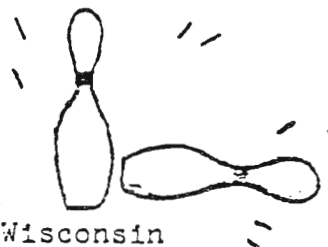
Hazard Class Numbers

- 1 Explosives
- 2 Compressed gases
- 3 Flammable/Combustible Liquids
- 4 Flammable solids
- 5.1 Oxidizers
- 5.2 Organic peroxides
- 6 Poisons
- 7 Radioactive materials
- 8 Corrosives





ATTENTION ALL MILWAUKEE
ROAD BOWLERS



The 40th ANNUAL MILWAUKEE ROAD BOWLING
TOURNAMENT is being held in Milwaukee Wisconsin
this year. It is being held at:

ECHO BOWL

5400 No. Pt. Washington Road
Milwaukee, Wisconsin

on APRIL 23 and 24, 1983. The Banquet is on
APRIL 23, 1983 also at:

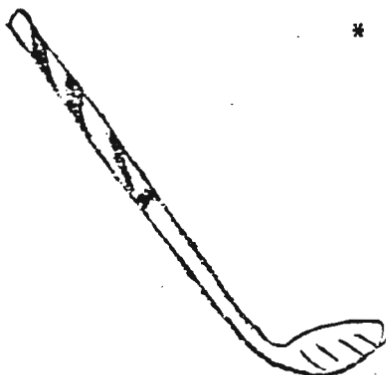
ECHO BOWL

For information or entrance forms contact either:

RON BOGUSZEWSKI: Home Phone - (414) 541-4645
Work Phone - (414) 271-6120 Ext. 356

JON GALIHER: Home Phone - (414) 464-2964
Work Phone - (414) 271-6120 Ext. 340

Also entrance forms will be located in many of the work
areas on the system.



*



*



ATTENTION

ATTENTION

ALL GOLFERS !!!

The ANNUAL MILWAUKEE ROAD GOLF OUTING will be
on JUNE 4th at :

SPRING VALLEY COUNTRY CLUB
SALEM WISCONSIN

For further information you may contact Mr.
RON SLOCUM c/o of the Depot at Fox Lake, Illinois.
Telephone number is (312) - 497-4269.

Look to our next issue for more information.

DON'T FORGET!! MARK YOUR CALENDARS - JUNE 4th

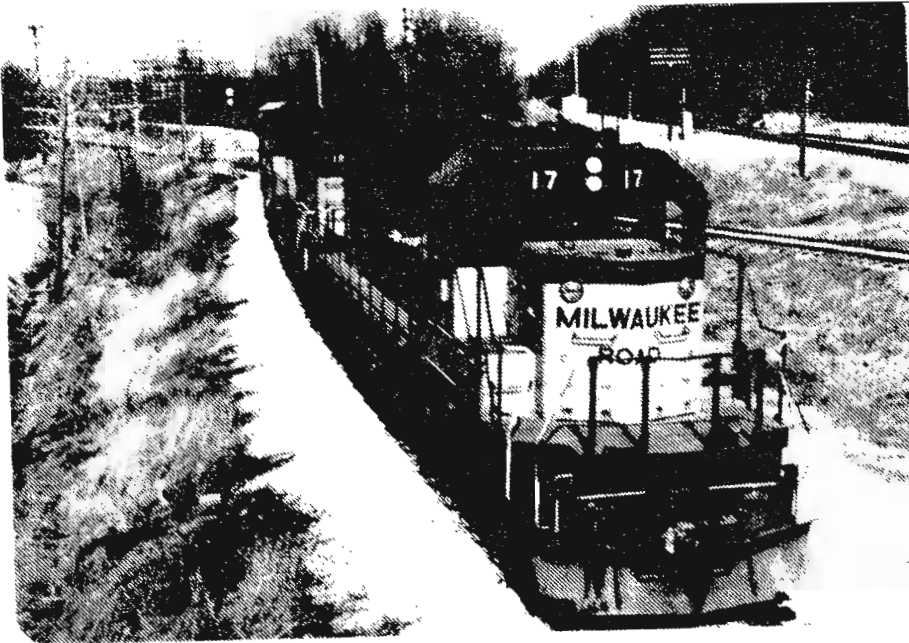
TERRE HAUTE NEWS:

Our SYMPATHY AND CONDOLENCES are expressed to the families of:

EDWARD G. COLEMAN who passed away last month at the age of 79.
Ed was a retired Agent who last served the agency at West Dana.

GLENN SHOEMAKER who passed away on March 2, 1983. Mr. Shoemaker was retired and was Section Foreman at Cheneyville.

The photograph below is train 204 as seen from the Dispatchers office at SpringHill Tower - Terre Haute, Indiana.



Ray Williams
Clerk - Terre Haute

*

*

*

WHO ARE RAILROAD PATRONS?

They are the people most important to this institution - in person, on the telephone or by mail.

They are not dependent on us -- we are dependent on them

They are not an interruption of our work -- they are the purpose of it. We are not doing them a favor by serving them-- they are doing us a favor by giving us an opportunity to serve them.

They are not outsiders to our business-- they are part of it.

They are not cold statistics -- they are flesh-and-blood human beings with feelings and emotions like our own.

They are people who bring us their business. It is our job to see that their business and requests are handled promptly and courteously.

This article was submitted by W. B. Kranz - Director of Customer Service - Southern Division

* * * * * ANSWERS * * * * *

- 21 -

PULL OUT PAGE TO SEND IN YOUR NEWS ARTICLES
OR PUZZLES, ANYTHING YOU MIGHT HAVE
TO CONTRIBUTE TO OUR NEWSLETTER.
EVERY LITTLE BIT HELPS!

MAIL TO: SOUTHERN DIVISION NEWSLETTER EDITOR
Sandy Willett
Room 107
Chicago Union Station

FROM: _____

DEPARTMENT _____

TITLE: _____

SAVANNA NEWS - March 15th

CONGRATULATIONS to:

Savanna Relay Operator DONALD WUEHLE and KATHERIN BUCK who were married on February 28th.

Nahant Roundhouse Employee RANDI HOY and WIFE who welcomed a little son to their fold on February 8, 1983 - LUKE DOUGLAS

Retired Genoa Agent HAROLD LAWSAUGH and his new bride MARIEN, they were married on HAROLD'S 71st Birthday, October 16, 1982. HAROLD now lives at 2830 Brueck Road, Dubuque, Iowa 51105

A recent communique lists retired Savanna Dispatcher Zeno "Jerry" Reiff enjoying retirement at Hastings, Minnesota.

OUR SYMPATHY AND CONDOLENCES are expressed to:

Dubuque agent R. G. "Bob" ARNTZ at the death of his father-in-law on Sunday March 6th and the death of his Mother on Wednesday, March 9, 1983.

Illinois Division Engineer HAROLD "Pete" KAUFFMAN at the death of his brother George.

C. E. Ross
Savanna

Thanks / to the men in the Reproduction Dept
for the great job they do in reproducing our
Newsletter.
Also I would to "Thank" the Mail Room on
the good job they do in mailing out our
Newsletter.

Thanks for all
your help!!
Sandy Willert

"Happy Easter" to
all our good friends
on the Milwaukee & their
families.

Editor - Sandy Willert - Supt Office Room 107

Staff - C. E. Ross - Savanna
E. M. Naak - Savanna
R. Williams - Tene Haute
R. Atwell - Chillicothe
B. Merideth - Muscatine

Advisor - Don Sullivan - Ch. Clk Supt Office

P.S. I hope you can read my handwriting as my typewriter died.