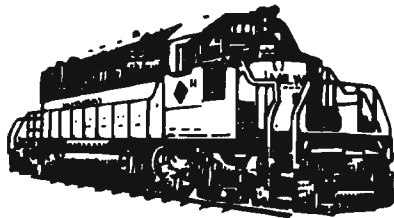


# Southern Division Newsletter

PULLING FOR SAFETY



THE  
MILWAUKEE  
ROAD



8-1-82

ABOUT OUR COVER - -

The PULLING FOR SAFETY AND MAKING TRACKS FOR THE FUTURE are the new Safety Stickers for the Milwaukee Railroad. Decals can be obtained thru the Rules and Safety Office at Chicago or may be obtained from any of the Rules and Safety men out in the field.

Another new item that the SOUTHERN DIVISION will be offering soon will be a blue and white cap with a locomotive on the front with the Milwaukee Emblem and it will say "SOUTHERN DIVISION". If anyone wishes to be put on the list for these hats they may contact Mr. W. E. Dunn at Bensenville on extension 4429, or may contact myself the Editor of the Newsletter on extension 3900 and I will inform Mr. Dunn of the needed hats.

\* \* \* \* \*

POLICE DEPARTMENT

The office of the Captain of Police for the Southern Division which was located at Galewood has now been relocated. The new office is located at BENSENVILLE in the old Callers Office Building and the new extension number is 4888 on the company line.

\* \* \* \* \*

HATS OFF to all the Trackmen for the respect shown for a funeral procession on June 15th at Clear Lake, Iowa.

Recently, a letter was written to the Railroad with a word of THANKS to these men. The letter states that the men stopped work stood and removed their hard hats as the procession passed and that many people were touched by this.

Compliments go to all you gentlemn on behalf of the family of MARLENE PETERSEN for the tremendous respect shown.

Carol A. Quinn  
Asst. Chief Clerk  
Superintendent's Office  
Chicago



The MILWAUKEE ROAD OFFICE of SOCIAL COUNSELING exists to furnish help to any EMPLOYEE of the MILWAUKEE ROAD or to any MEMBER OF THE MILWAUKEE ROAD EMPLOYEE'S FAMILY. It might be a good idea to explain exactly what that means.

Often some member of a family is having problems, and the other members of the family do not know what to do about it. Often good sources of help are the family doctor or a member of the clergy, but for some reason or other, family members are reluctant to ask for help from someone who is well known to the family. They are afraid that unwanted information will leak out, or would rather just not talk about personal matters to someone who is so close to the family.

This is one of the places where our counselors can be of help. ANY member of the family can contact a counselor, with the absolute assurance that COMPLETE CONFIDENTIALITY will be maintained. The counselors are professionals, and maintain the highest professional standards. If a problem is important to you, it is important to them.

In the ten years the program has been in existence, more than twelve hundred employees and family members have sought help from the EMPLOYEE ASSISTANCE PROGRAM. Most of them have been helped. The service is FREE. What have you got to lose? Give it a try!!

OFFICE OF THE SOCIAL COUNSELING

PUZZLE CORNER:

This month we have a mind boggler puzzle. The EQUATION ANALYSIS TEST by Will Shortz (this is an excerpt from Games Magazine)

INSTRUCTIONS: Each equation below contains the initials of words that will make it correct. Find the missing words.

FOR EXAMPLE:  $26 = \text{L.of the A.}$  would be  $26 = \text{Letters of the Alphabet.}$

- |   |   |
|---|---|
| a) $26 = \text{L.of the A.}$              | m) $8 = \text{S. on a S.S.}$            |
| b) $7 = \text{W. of the A.W.}$            | n) $3 = \text{B.M.(S.H.T.R.)}$          |
| c) $1,001 = \text{A.N.}$                  | o) $4 = \text{Q.in a G.}$               |
| d) $12 = \text{S. of the Z.}$             | p) $24 = \text{H.in a D.}$              |
| e) $54 = \text{C. in a D. (with the J.)}$ | q) $1 = \text{W. on a U.}$              |
| f) $9 = \text{P. in the S.S.}$            | r) $5 = \text{D. in a. Z. C.}$          |
| g) $88 = \text{P.K.}$                     | s) $57 = \text{H.V.}$                   |
| h) $13 = \text{S. on the A.F.}$           | t) $11 = \text{P. on a F.T.}$           |
| i) $32 = \text{D. F. at which W.F.}$      | u) $1,000 = \text{W. that a P. is W.}$  |
| j) $18 = \text{H. on a G.C.}$             | v) $29 = \text{D. in F. in a L.Y.}$     |
| k) $90 = \text{D. in a R.A.}$             | w) $64 = \text{S. on a C. B.}$          |
| l) $200 = \text{D. for P.G. in M.}$       | x) $40 = \text{D. and N. of the G. F.}$ |

ANSWERS FOR THIS PUZZLE WILL APPEAR IN OUR NEXT MONTHS ISSUE

GOOD LUCK

Puzzle submitted by: M. E. Beckert  
Passenger Division

CHICAGO TERMINAL NEWS!!!!

NEWS FLASH - Rumor has it that a September 11th wedding is being planned between SANDY MODRZEJEWSKI, Secretary to the Superintendent - Southern Division and CRAIG WILLETT, Manager Rules - Southern Division. The happy couple are expected to honeymoon in the Blue Ridge Mountains of West Virginia that is barring any problem at the Ottumwa Dispatchers Office.

The main questions being circulated around the division is---  
"WHAT TOOK YOU SO LONG CRAIG???"

"The Unknown Conductor"

CONGRATULATIONS to Local Chairman GENE VONESSEN and his lovely Wife on the arrival of a 9 lb. 6 oz. bouncing baby boy - Scott Benjamin - born on June 29, 1982 at 1:53 p.m.

CONGRATULATIONS !!!!!!!

CONGRATULATIONS are extended to CARL BAUMKIRCHNER of the Southern Division Customer Service Department on the marriages of Carl's children - his son KARL who is a Specialist 4 in the 87th Airborne Army Paratroopers on his wedding which is planned for September 17th in Germany and also to his daughter KAREN on her marriage to Mr. Pat Derrie on July 17th.

CONGRATULATIONS !!!!!!!!

A SPECIAL GET WELL wish is sent to MARY KAY REIBEL, Correspondent in the Assistant Vice President - General Manager's Office at Chicago who has recently undergone surgery. MARY KAY is at home recuperating and from all my sources is doing fine.

GET WELL AND HOPE YOUR UP AND ABOUT  
SOON !!!!!!!!

MASON CITY NEWS

NEWS FLASH !!!

On July 15, 1982 at 4:00 p.m. our Agent - HERB MASCHING at Mason City, Iowa went into labor at approximately 4:45 p.m. on July 15th - Herb delivered a 7 lb, 4oz, baby girl named Kristin Ray - Mr. Masching is expected to recover in a week.

A FRIEND

CONGRATULATIONS to Mr. and Mrs. Herb Masching on the announcement of their daughters baby - Kristin Ray being born on July 15th at 4:45 p.m. - You can understand why Herb acted like the expectant mother since this is their VERY FIRST GRANDCHILD.

CONGRATULATIONS !!!!!!!

\* \* \* \* \*

SAVANNA AREA

Our only bit of news in the Savanna Area this month was that Roadmaster JON BURSHEIM and Field Instructor LINDA COYLE were married on Saturday, June 19, 1982 at the First Methodist Church of Savanna with a reception following the service at Buck's Barn.

The happy coupled honeymooned up in Minnesota where they were going fishing.

CONGRATULATIONS FOR A LONG, HAPPY  
AND PROSPEROUS LIFE TOGETHER.

C. E. Ross, Operator

CHILLICOTHE AREA:

AUGUST WEDDING ANNIVERSARIES: Congratulations and Best Wishes are expressed to the following couples which are going to be celebrating their anniversaries.

Harold "Red" and Joyce Frizzell, Signal Maintainer at Chillicothe who will be celebrating on August 11th

Mr. and Mrs. John E. Murphy, Section Foreman at Seymour on their anniversary on August 26th.

CONGRATULATIONS to Mr. Greg BeVelle and Ms. Lori Bouyer on their wedding to be held on July 31, 1982 at the Calvary Baptist Church at Chillicothe, MO. Greg is a section laborer at Liberty, MO. BEST WISHES FOR A LONG AND PROSPEROUS MARRIAGE.

Our Sympathy and condolences are expressed to Timmy Carter on the loss of his Father.

Ron Atwell

\* \* \* \* \*

TERRE HAUTE AREA NEWS

The SOUTHERN DIVISION would like to welcome to its family PAT WHELAN -former Field Instructor at Milwaukee on his transfer to the Terre Haute Agency. Mr. Whalen has been with the Milwaukee Road for the past 19 years first starting out at Dubuque, Iowa. WELCOME ABOARD!!!!!!

\* \* \* \* \*

OTTUMWA AREA NEWS

CONGRATULATIONS to Howard and Elaine Neff on the arrival of a bouncing baby girl born July 2, 1982 at 9:35 a.m. McKensie weighed in at 7 lbs. Little McKensie was operated on July 6, 1982 for a blockage in her stomach which from reports from the proud father is doing fine and will soon be coming home. Again we are all sorry that McKensie had to undergo surgery but are happy for both McKensie and her Proud Parents that she will be coming home soon. CONGRATULATIONS TO ALL !!!!!

OTTUMWA NEWS CONTINUED

CONGRATULATIONS and BEST WISHES to Jim Sieverding - Carman at Ottumwa, Iowa on his recent marriage.

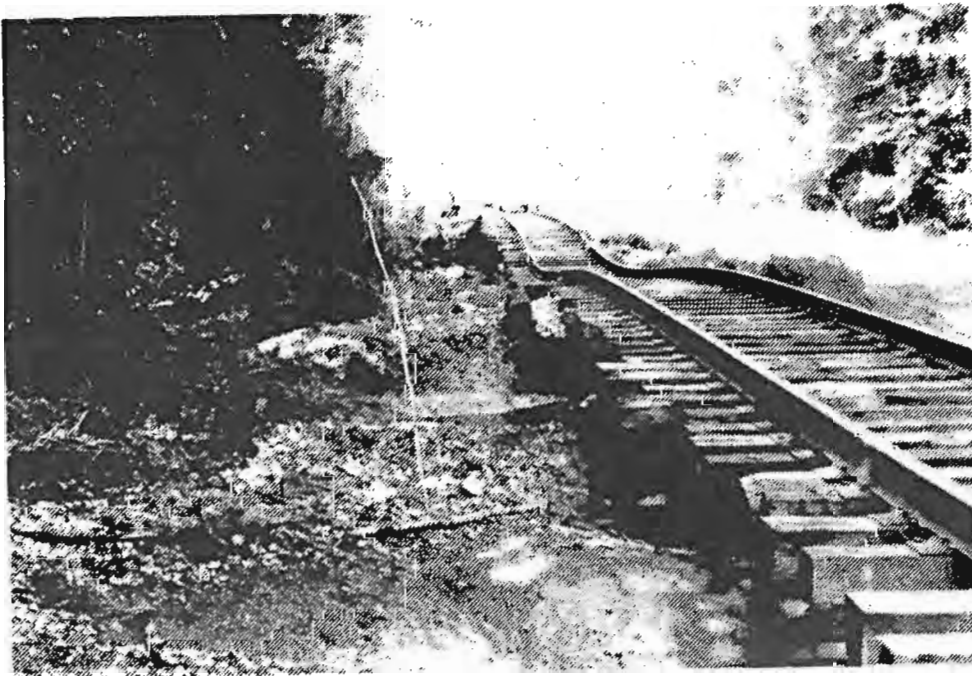
Rick Wees - Carman at Ottumwa, Iowa has recently undergone surgery on his shoulder. Mr. Wees is recuperating and we all hope to see him up and about soon.

\* \* \* \* \*

As everyone on the Railroad knows the Kansas City line has been hit with an inordinate amount of flood damage this year, especially between Chillicothe and Braymer. Mr. Cruikshank, Mr. Plattenberger and myself feel that all the employees involved, in all the different crafts, did a tremendous job in restoring service in these areas, as well as getting the railroad operating again after some of the difficult derailments. All the employees involved put in long, hard hours and again we would like to express our thanks for a job well done.

J. W. Stuckey  
Superintendent

The pictures below and on the following page were taken by and courtesy of Division Engineer R. J. Brueske. These pictures were taken at Dawn, Missouri on June 10, 1982:

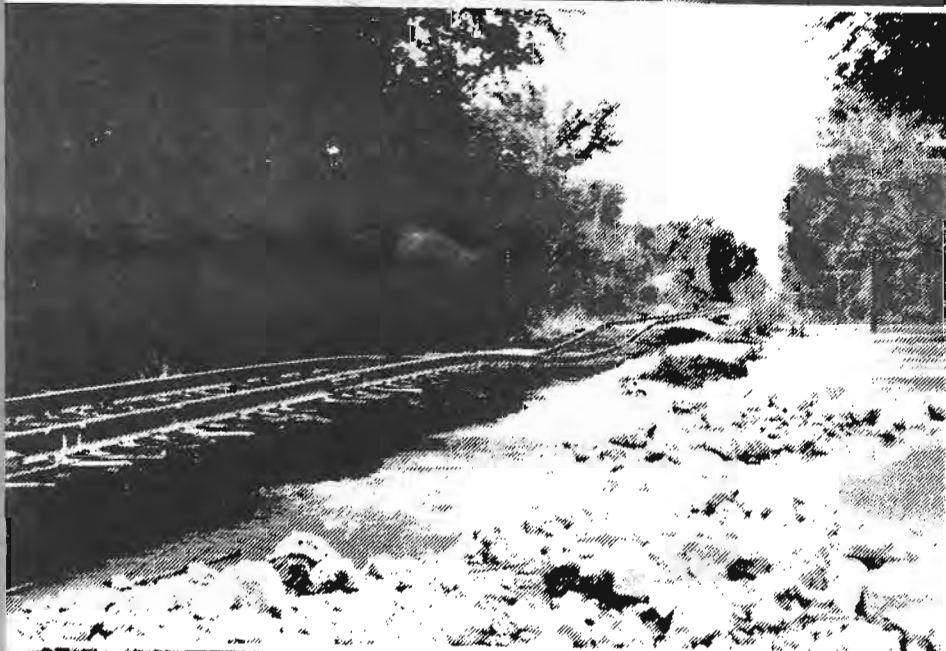


Dawn, Missouri  
MP 237.8

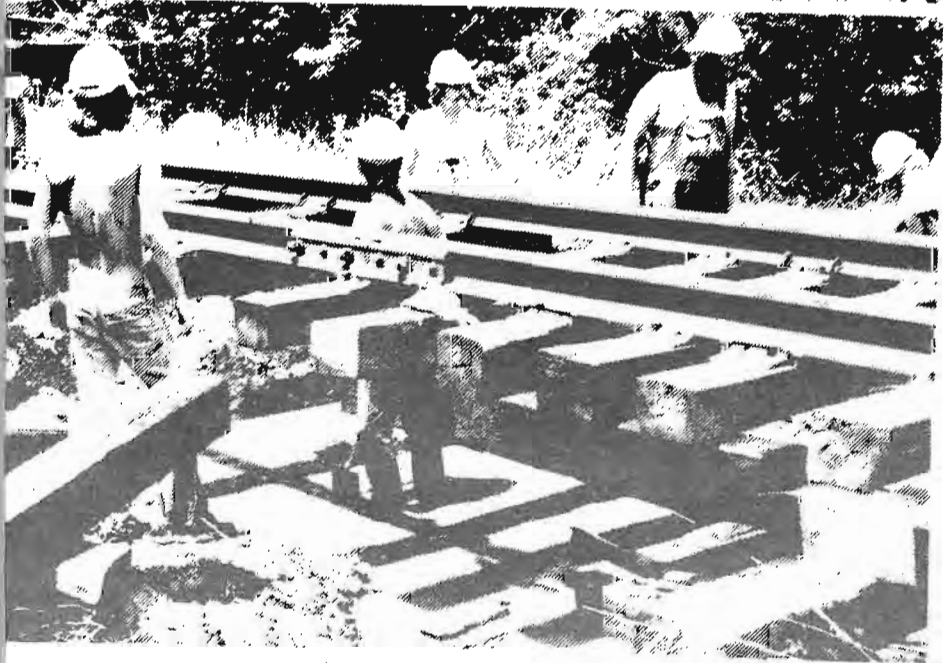




Track between the trees  
bottom center to left hand-  
corner - South of Chillicothe  
Mo.



Dawn, Missouri  
MP 237.9



Crib Crew  
Dawn, Missouri  
MP 238.7

MILWAUKEE WISCONSIN NEWS CORNER

OFFICE OF THE TEST DEPT. by Mr. L. Pesetsky, Asst. Chief Engineer Tests

Few employees of the Railroad are probably aware that the Test Dept. routinely analyzes samples of lube oil taken periodically from the crankcase of every operating locomotive. These lube oil samples are submitted to the Test Department at least once a month by the Diesel House maintenance personnel. Each sample is analyzed to determine if the locomotive engine has fuel or water leak and whether the engine is developing unusual wear patterns. Any deficiencies found are reported immediately to maintenance personnel for corrective action.

This test procedure not only enables the railroad to conserve locomotive fuel and lube oil but also improves the performance reliability of the diesel engine. The Test Department has recently initiated a computer scheduling program which will help maintenance personnel in determining when lube oil samples are due from each locomotive. This will help insure that all Milwaukee II locomotives are sampled at the required frequency and more importantly provide the valuable information needed to keep our locomotive fleet operating efficiently.

\* \* \* \* \*

MILWAUKEE RAILROAD BOWLING TOURNAMENT

The annual Milwaukee Railroad Bowling Tournament this year was held at the Echo Bowl in Milwaukee, Wisconsin. The hosts were Jon Galiher and Ron Boguszewski.

We would like to congratulate M. Vanko and M. Fitzgerald on winning first prize in the Doubles with a total of 1276 pins worth \$110.00 - Team Event first place when to the Mud Hole Five from St. Paul with a total of 3022 pins - which was good for \$170.00. The singles event was won by Jennifer Rinne from Elgin, Illinois with a total of 717 pins for \$80.00. The total for all events was won by Jeff Cizmowski from Milwaukee with a total of 1981 pins good for \$30.00. All of the above winners were presented Trophies along with their cash prizes.

Just a reminder that Next Year 1983 Milwaukee Wisconsin will be again hosting the tournament which will be held at the Echo Bowl.

CONGRATULATIONS TO ALL THE BOWLERS WHO PARTICIPATED IN THE EVENT  
WITH A SPECIAL CONGRATULATIONS TO THE DOUBLES PAIR -  
Good bowling guys!!!!!!!!!!!!!!!!!!!!!!!!!!!!!!!!!!!!

## RULES AND SAFETY

Listed below are 3 out of 11 of the most commonly misunderstood statements relating to Railroad Safety Programs taken from the AAR Flyer from Washington, D.C., they are entitled FOLKLORE OF RAILROAD SAFETY:

1. Accidents are caused by unsafe acts, unsafe conditions or unsafe procedures. Fact: This theory of accident causation, attributed to Heinrich, has led generations of safety directors to attempt to find and label one of these three items as the "cause" of an accident. And this has, in turn, led to the identification and attempted correction of superficial failures in management systems and employee self-control which allowed these three items to exist. Identification of the underlying system or man failure leads to corrections which will prevent many different types of accidents.
  
2. Railroad safety programs tend to be pretty much the same in content and application. Fact: The recently completed AAR survey of 18 railroad safety officers shows a wide variation of content, responsibilities and application in railroad safety programs. The theory that there is "one best way" to conduct a railroad safety program is difficult to defend. Management organization and style, economic factors and geography all play a part in determining safety programming.
  
3. The safety department is responsible for the safety program on a railroad. Fact: Safety Departments and safety officers seldom have responsibility for more than a part of the railroads total safety effort. Several other departments have responsibilities which have a large impact on safety performance. A good understanding of this total picture by management is necessary to development of a coordinated accident prevention effort.

In the next few issues you will be reading the Folklore of Railroad Safety. This article was provided by the Safety and Rules Department. We all hope you enjoy it.

-----

Another bit of information next month is that the Rules and Safety Department is starting in the Operating Department only, the Operating Rule Topic of the Week instead of the Rule of the Day. This will be effective for August. Don't forget be sure to read the rule of the week and be ready for any questions the Supervisors may ask.

REMEMBER THE BEST WAY IS THE SAFE WAY

SAVANNA AREA

Our Sympathy and Condolences are expressed to the family of Mrs. Irene Cottral who has passed away. Mrs. Cottral was the widow of deceased Iowa Division Conductor Max Cottral and mother of Iowa Division Brakeman Jack Cottral of Savanna.

\* \* \* \* \*

Article submitted by  
Bob Schuster - Engr. Dept.

## **Every TV set has a warning system**

Did you know that your television set is a built-in tornado detection device? Let your set warm up. Turn it to Channel 13 and darken the screen to nearly black by using brightness control.

Then switch to Channel Two, leaving the volume turned down unless there is a broadcaster on that channel. The "tornado detector" is now ready for operation. As a storm approaches, lightning will produce a white band of varying width across the screen (color sets will produce a colored band).

A tornado within 15 to 20 miles

will produce a totally white screen and it will remain white. If this occurs, turn off the set, take a battery-operated radio, and go to a place of shelter at once.

How does the system work? Every television set has Channel Two set at 55 megacycles. Lightning and tornados generate a signal near this frequency which override the brightness control. Channel 13, at the high end of the frequency band, is not affected. This is why the darkness must be adjusted on that channel.

\* \* \* \*

I would like to say THANKS to all the employees that have taken their time to jot down articles and bits of information that has helped to put these Newsletters together. Without the help of the people in the field we could not have a successful paper.

THANKS AGAIN TO EVERYONE!!!

Editor

EDITOR: Sandy Modrzejewski  
Superintendent's Office  
232 S. Canal  
Chicago, IL 60606

STAFF: C. E. Ross, Operator - Savanna  
Ray Williams, Terre Haute  
Ron Atwell, Chillicothe  
Betty Merideth, Clerk- Muscatine

ADVISOR: Don Sullivan - Chief Clerk  
Superintendent's Office Chicago